

## St Mark's Caring with Guts since 1835 has raised £11k!

✨ Thank You! ✨

A huge THANK YOU to everyone who has supported our appeal, 'St Mark's, Caring with Guts since 1835'. With your generosity, we've raised an incredible **£11,784** to support people with complex bowel disease.

Every single donation, no matter the size, makes a meaningful difference.

We know January can be a tough month financially, but if you're able, donating just **£5** – the cost of your commute if you're working from home or the cost of a coffee – could help us reach our goal and fund vital research.

If you'd like to support us today, please visit our [JustGiving page here:](https://www.justgiving.com/campaign/caringwithgutssince1835)  
<https://www.justgiving.com/campaign/caringwithgutssince1835>

---

## Your Support Makes a Difference

Together, we are making a difference, but we must do more. Bowel disease is impacting more lives. By supporting us, you enable St Mark's to:

- Advance cutting-edge treatments, like those offered through St Mark's Surgical Robotics Research Programme, which is setting new standards in minimally invasive surgery.
- Build essential resources, such as the St Mark's Tissue Bank, a unique asset for groundbreaking studies into bowel disease.

- Expand St Mark's impact globally, by educating and training medical professionals in clinical best practice which, in turn, is helping patients to thrive beyond their diagnosis.

## FUND RESEARCH ADVANCING KNOWLEDGE



Miss Sara Renshaw is a St Mark's Research Fellow whose project will support improved care for patients with IBD.



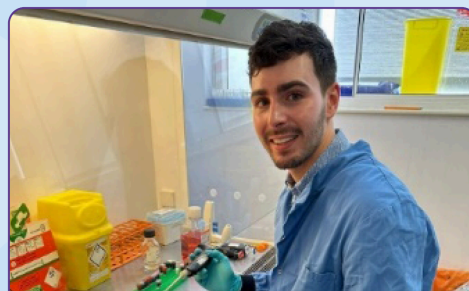
St Mark's patient, Natalie, representing the patient's voice at Frontiers.

## SHARE CLINICAL BEST PRACTICE WITH THE MEDICAL COMMUNITY

## INVEST IN SPECIALIST EQUIPMENT



Robin completed the Ealing Half Marathon three months after undergoing robotic surgery at St Mark's for Crohn's disease.



Luke at work in the lab; his research is focused on understanding fistula formation in perianal Crohn's disease to inform the development of better treatments.

## CREATE FUTURE-PROOF RESEARCH RESOURCES

By supporting St Mark's, you continue a legacy of giving that began with the novelist Charles Dickens and that has helped to transform countless lives. Your donations provide even more patients the hope of future where bowel disease is preventable, treatable, and ultimately curable. **Together, let's end bowel disease for good.**

Donate here to support St Mark's, who have been Caring with Guts since 1835

---

*Copyright © 2023 St Mark's Hospital Foundation, All rights reserved.*

**Our mailing address is:**

St Mark's Hospital Foundation, St Mark's at Central Middlesex, Acton Lane, London, NW10 7NS

Want to change how you receive these emails?

You can update your preferences or unsubscribe from this list.